

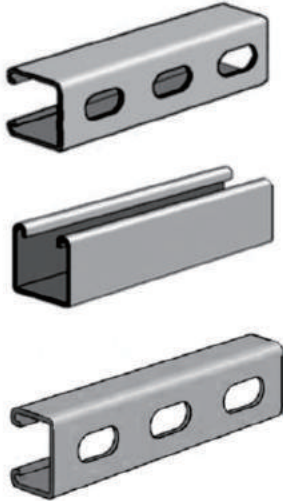
ELECTRICAL PRODUCTS CATALOG



Fixing, Holding and Support

Fijación, Sujeción y Soporte

Strut Channel



CAT#		Width	Height	Thickness	Galvanizing
Slotted	Plain				
SPS4115	PPS4115	41mm	41mm	1.5mm	Pre-Gal.
SPS4120	PPS4120	41mm	41mm	2.0mm	Pre-Gal.
SPS4125	PPS4125	41mm	41mm	2.5mm	Pre-Gal.
SPS2115	PPS2115	41mm	21mm	1.5mm	Pre-Gal.
SPS2120	PPS2120	41mm	21mm	2.0mm	Pre-Gal.
SPS2125	PPS2125	41mm	21mm	2.5mm	Pre-Gal.
SHS4115	PHS4115	41mm	41mm	1.5mm	H.D.G.
SHS4120	PHS4120	41mm	41mm	2.0mm	H.D.G.
SHS4125	PHS4125	41mm	41mm	2.5mm	H.D.G.
SHS2115	PHS2115	41mm	21mm	1.5mm	H.D.G.
SHS2120	PHS2120	41mm	21mm	2.0mm	H.D.G.
SHS2125	PHS2125	41mm	21mm	2.5mm	H.D.G.

Threaded Rod



CAT#		Size	Diameter (mm)		Pitch (mm)
Galvanized	Blackened		Min	Max	
GM5	BM5	M5	4.84	4.97	0.8
GM6	BM6	M6	5.8	5.96	1
GM8	BM8	M8	7.77	7.96	1.25
GM10	BM10	M10	9.74	9.96	1.5
GM12	BM12	M12	11.71	11.95	1.75
GM14	BM14	M14	13.7	13.94	2
GM16	BM16	M16	15.7	15.94	2
GM18	BM18	M18	17.64	17.93	2.5
GM20	BM20	M20	19.64	19.93	2.5
GM22	BM22	M22	21.64	21.93	2.5



CAT#		Size	Diameter (mm)		Pitch (mm)
Galvanized	Blackened		Min	Max	
G0316	B0316	3/16"	4.62	4.8	24
G0104	B0104	1/4"	6.12	6.32	20
G0516	B0516	5/16"	7.69	7.91	18
G0308	B0308	3/8"	9.25	9.39	16
G0716	B0716	7/16"	10.82	11.08	14
G0102	B0102	1/2"	12.39	12.66	13
G0508	B0508	5/8"	15.53	15.83	11
G0304	B0304	3/4"	18.68	19.00	10
G0708	B0708	7/8"	21.82	22.18	9
G1000	B1000	1"	24.97	25.35	8

Strut Clamp with Carriage Bolt



CAT#	Size	CAT#
IMC		EMT
20050	1/2"	21050
20075	3/4"	21075
20100	1"	21100
20125	1-1/4"	21125
20150	1-1/2"	21150
20200	2"	21200
20250	2-1/2"	21250
20300	3"	21300
20350	3-1/2"	21350
20400	4"	21400

Pipe Clamp with Rubber Profile



CAT#	Size	Pipe O.D. Range
25050	1/2"	20-25mm
25075	3/4"	26-30mm
25100	1"	32-36mm
25125	1-1/4"	38-43mm
25150	1-1/2"	47-51mm
25200	2"	53-58mm
25250	2-1/2"	68-72mm
25300	3"	75-80mm
25400	4"	113-118mm
25500	5"	148-152mm
25600	6"	159-166mm

Swivel Loop Hanger - Colgadores pera



CAT#	Size	Pipe O.D.(mm)
23050	1/2"	21.3
23075	3/4"	26.7
23100	1"	33.4
23125	1-1/4"	42.2
23150	1-1/2"	48.3
23200	2"	60.3
23250	2-1/2"	73
23300	3"	88.9
23350	3-1/2"	101.6
23400	4"	114.3
23500	5"	141.3
23600	6"	168.3

Clevis Hanger - Colgadores clevis



CAT#	Size	Pipe O.D.(mm)
24050	1/2"	21.3
24075	3/4"	26.7
24100	1"	33.4
24125	1-1/4"	42.2
24150	1-1/2"	48.3
24200	2"	60.3
24250	2-1/2"	73
24300	3"	88.9
24350	3-1/2"	101.6
24400	4"	114.3
24500	5"	141.3
24600	6"	168.3

U-Bolt with Nuts



CAT#	Size	Pipe O.D.(mm)	Bolt Size
26050	1/2"	21.3	M6
26075	3/4"	26.7	M6/M8
26100	1"	33.4	M6/M8/M10
26125	1-1/4"	42.2	M6/M8/M10
26150	1-1/2"	48.3	M6/M8/M10
26200	2"	60.3	M6/M8/M10/M12
26250	2-1/2"	73.0	M6/M8/M10/M12
26300	3"	88.9	M6/M8/M10/M12
26350	3-1/2"	101.6	M6/M8/M10/M12
26400	4"	114.3	M6/M8/M10/M12

Conduit Hanger



CAT#	Size
22050	1/2"
22075	3/4"
22100	1"
22125	1-1/4"
22150	1-1/2"
22200	2"
22250	2-1/2"
22300	3"
22350	3-1/2"
22400	4"

Pipe Clamp



CAT#	Size	Pipe O.D.(mm)
30075	3/4"	26.7
30100	1"	33.4
30125	1-1/4"	42.2
30150	1-1/2"	48.3
30200	2"	60.3
30250	2-1/2"	73
30300	3"	88.9
30350	3-1/2"	101.6
30400	4"	114.3
30500	5"	141.3
30600	6"	168.3

Riser Clamp



CAT#	Size	Pipe O.D.(mm)
27075	3/4"	26.7
27100	1"	33.4
27125	1-1/4"	42.2
27150	1-1/2"	48.3
27200	2"	60.3
27250	2-1/2"	73
27300	3"	88.9
27400	3-1/2"	101.6
27400	4"	114.3
27400	5"	141.3
27400	6"	168.3

NM Cable Clip



CAT#	Size
NMC516	5/16"

Steel Beam Clamp



CAT#	Size
28104	1/4"
28308	3/8"

NM Cable Clip with Bracket



CAT#	Size
NMCB516	5/16"

Malleable Iron Beam Clamp



CAT#	Size
29006	M6
29008	M8
29010	M10
29012	M12
29104	1/4"
29308	3/8"
29102	1/2"

Channel Nut



CAT#	Size
CN014	1/4"
CN516	5/16"
CN038	3/8"
CN716	7/16"
CN050	1/2"

Channel Nut With Spring



CAT#	Size
SN014	1/4"
SN516	5/16"
SN038	3/8"
SN716	7/16"
SN050	1/2"

Drop-In Anchor



CAT#	Size
DA06	M6
DA08	M8
DA10	M10
DA12	M12
DA14	M14
DA0104	1/4"
DA0516	5/16"
DA0308	3/8"
DA0102	1/2"

Hex Coupling Nuts



CAT#	Size
HCN06	M6
HCN08	M8
HCN10	M10
HCN12	M12
HCN14	M14
HCN0104	1/4"
HCN0516	5/16"
HCN0308	3/8"
HCN0102	1/2"

Stand Off Strap



CAT#	Size	Pipe O.D.(mm)
105075	3/4"	26.7
105100	1"	33.4
105125	1-1/4"	42.2
105150	1-1/2"	48.3
105200	2"	60.3

Wrap Around Strap



CAT#	Size	Pipe O.D.(mm)
107075	3/4"	26.7
107100	1"	33.4
107125	1-1/4"	42.2
107150	1-1/2"	48.3
107200	2"	60.3

Side Mount Strap



CAT#	Size	Pipe O.D.(mm)
109075	3/4"	26.7
109100	1"	33.4
109125	1-1/4"	42.2
109150	1-1/2"	48.3
109200	2"	60.3



Nail Strap



CAT#	Size
NS050	1/2"
NS075	3/4"
NS100	1"

Adjustable Hinge

CAT#	Size
31002	2 Holes
31003	3 Holes
31004	4 Holes

Authorized distributor



汉纳森电气
HANYSEN
PERFECT ELECTRICAL SOLUTION

Tel/Fax:+86 571 82675286

Cell/Wechat:+86 18058129110

Rm1405, Office Building B, Henglong Square,
Xiaoshan District, Hangzhou, Zhejiang, China

info@hanysen.net benson@hanysen.net